

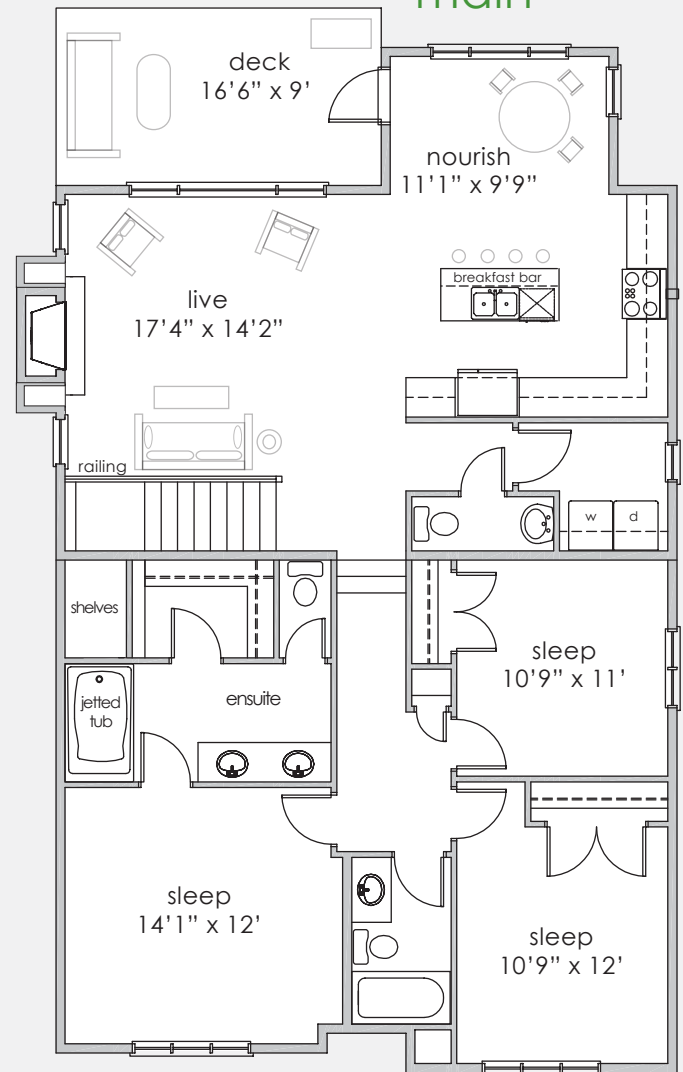
The Hughes

1630 sq.ft. - 1634 sq.ft.



- 3 bedrooms with 2.5 baths
- Stainless kitchen appliances
- 9' ceilings (main floor and basement)
- Landscaping (front)
- Main floor laundry
- Oversize two car garage
- Separate basement entrance
- Rear lane access/parking
- Garage heater

main



below

