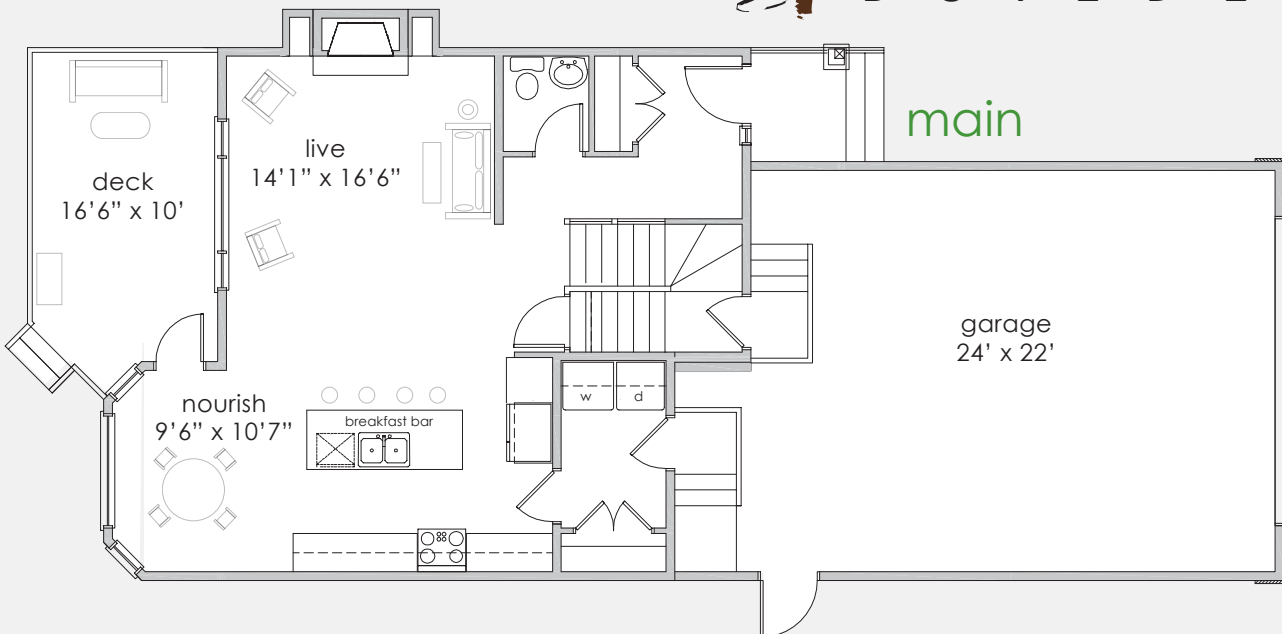


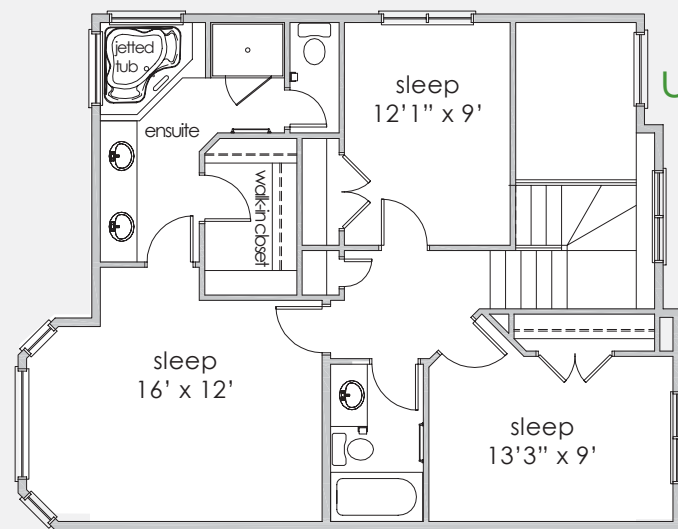
The Shelburne

1660 sq.ft.



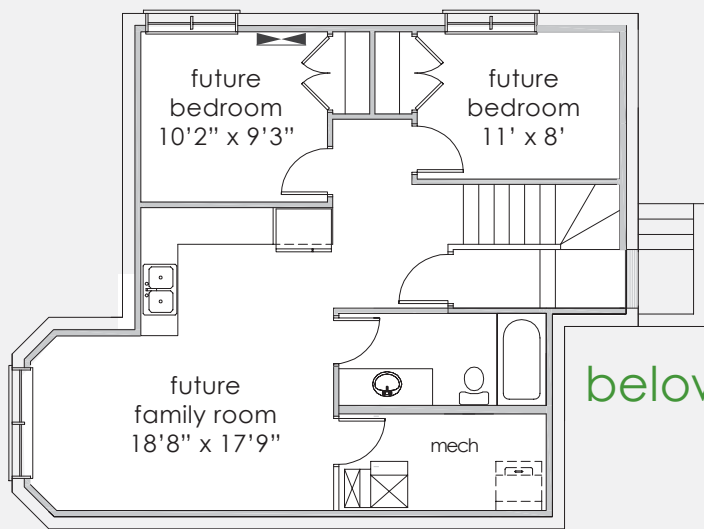
main

garage
24' x 22'



upper

- 3 bedrooms with 2.5 baths
- Oversized two car garage
- 9' ceilings (main floor and basement)
- Separate basement entrance
- Stainless kitchen appliances
- Glass backsplash
- Oversized pantry cabinet
- Main floor laundry
- Fibre optic to the home (telus)
- Landscaping (front)



below



All plans and amenities are subject to change at anytime without warning. Actual front elevation may differ.